

Community Level Impacts

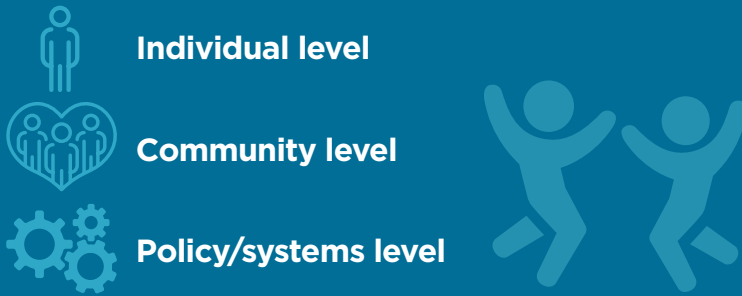


Goals of the Community Level Impact Study

- Describe impacts in communities receiving RECO activities overall, by strategy types, and across different types of neighborhoods in Los Angeles County.
- Leverage detailed information on timing and location of RECO activities.

RECO Overview

First 5 Los Angeles funded RECO investments to adopt a wide variety of strategies to address early childhood obesity at the following levels:

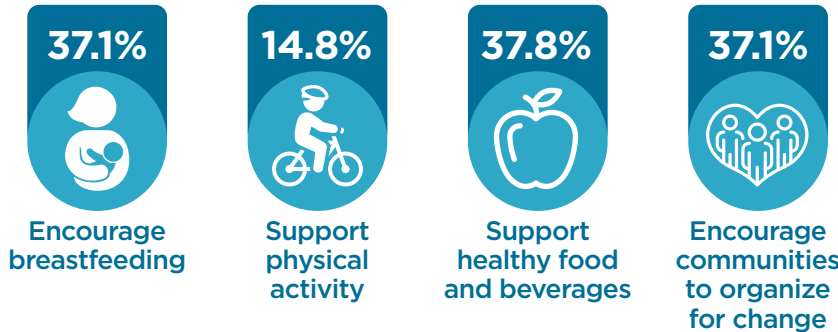


Impact Lifespan



Impact Activities

Percentage of Census Tracts in LA County with RECO Activities Using Strategies



RECO Impact



No evidence of difference in impact across the four strategy types

Impacts by Community Characteristics



MAJORITY non-white communities experienced **significantly higher reductions** in child obesity



BOLD THINKERS
DRIVING
REAL-WORLD
IMPACT



SARAH SAMUELS CENTER
FOR PUBLIC HEALTH
RESEARCH & EVALUATION

