

# CLIMATE HEALTH COUNTS™

Powered by Abt Associates

*Your one-stop solution  
for quantifying and  
monetizing the health  
benefits of climate action.*



The public health benefits of climate action are hard to quantify—but they can be vast and can address inequities within disadvantaged communities.

Abt's **Climate HealthCounts™** takes readily available data from governments' existing climate action planning to generate estimates of the public health benefits that result from air quality improvements.

## Abt's Climate HealthCounts™—

- **Models air quality improvements** resulting from reductions in air pollution emissions.
- **Quantifies public health benefits** of improved air quality such as fewer hospitalizations, emergency department visits, and premature deaths.
- **Determines the monetized value** of those health benefits.
- **Creates accessible outputs**, including maps to analyze how benefits are distributed throughout the state or region, and charts to summarize the equity impacts of the benefits.

1

### Start by Reviewing Your State Climate Action Plan

Look for changes in fossil fuel consumption data over time across key sectors:

- Electricity generation
- Commercial/Residential
- Industrial
- Transport

2

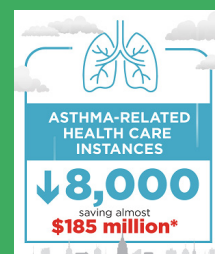
### Connect with an Abt Climate Expert to Apply Our Climate HealthCounts™ Model

Explore how changes in air pollution from clean energy policies and programs impact marginalized or disadvantaged communities.

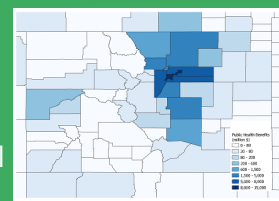
3

### Receive Actionable Outputs

- Estimates of the economic value of the health benefits of clean energy programs to compare against program costs



- Maps showing benefits from reductions in emissions at the county-level



- Distribution of impacts across marginalized and disadvantaged communities

Change in  
emissions

Change  
in PM<sub>2.5</sub>  
Concentrations

Change  
in Health  
Outcomes

Economic &  
Monetary  
Value of  
Health  
Outcomes

[abtassociates.com](http://abtassociates.com)

## Additional Services Supporting Climate Action

### *Climate Resilience Planning*

We systematically apply a climate lens to programs and challenges within health, housing, natural resources, education, and economic growth. Through a context-sensitive approach, we develop risk mitigation plans grounded in participatory engagement and underpinned by data, which also enables the quantification and monetization of climate resilience planning benefits.

### *Geospatial Climate Risk Mapping*

We combine spatial layers of socioeconomic information and climate change impacts metrics to characterize risk and potential benefits of climate action. From flood risk modeling to fill in downscaled climate data gaps, to precision geography tools that uncover highly localized risks, our place-based modeling drives informed climate action.

### *Environmental Justice and Climate Equity Assessment and Solutions*

We characterize the uneven distribution of adverse effects across marginalized populations, assess cumulative risk, quantify co-benefits of climate action, and facilitate the inclusive co-creation of solutions.

### *Climate Communications*

Our climate communications team develops innovative resources to communicate the impacts of climate change to diverse audiences, including using advanced data visualization techniques. Our innovative climate change information and analytical tools include online digital resources and toolkits, to help federal, state, and local clients.



## Connect With Our Experts

To learn more about our capabilities in Climate, Energy and Environment, contact our experts or visit us at [abtassociates.com](https://abtassociates.com).



#### **David Cooley**

*Senior Associate*

Climate Change

919-294-7793

[David\\_Cooley@abtassoc.com](mailto:David_Cooley@abtassoc.com)



#### **Joe Donahue**

*Senior Associate*

Climate Change

303-381-8205

[Joe\\_Donahue@abtassoc.com](mailto:Joe_Donahue@abtassoc.com)



**BOLD  
THINKERS  
DRIVING  
REAL-WORLD  
IMPACT**



### **Pursuing Equity. Looking for the Intersections. Driving Real-World Impact.**

Abt Associates is a global consulting and research firm that uses data and bold thinking to promote equity and improve the quality of people's lives. From advancing positive health outcomes and just environmental and social policy to crafting digital, data-centric solutions and bolstering economic security, we partner with clients and communities to tackle their most complex challenges.